

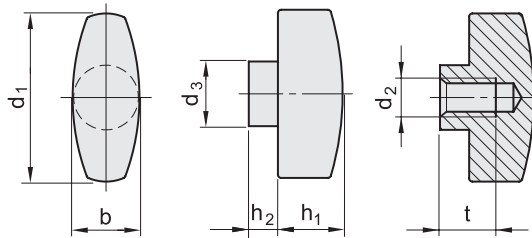
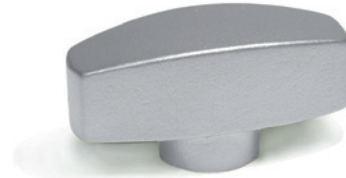
- 1
- 2
- 3
- 4
- 5
- 6
- 7
- 8
- 9
- 10
- 11
- 12
- 13
- 14
- 15
- 16
- 17
- 18

STANDARD EXECUTIONS

- **GN 434-NI:** cast AISI CF-8 stainless steel, sandblasted matte finish.
- **GN 434-A4:** cast AISI 316 stainless steel, sandblasted matte finish.

FEATURES AND APPLICATIONS

These wing knobs allow high tightening torque values and a comfortable grip, thanks to the elongated hub.



Conversion Table	
1 mm = 0,039 inch	
d1	
mm	inch
20	0.79
26	1.01
34	1.34

GN 434-NI



Code	Description	d1	d2	d3	b	h1	h2	tmin	⚖
GN.18691	GN 434-NI-20-M4-MT	20	M4	8	9	8	3.5	7	18
GN.22140	GN 434-NI-26-M4-MT	26	M4	10	11	10	4.5	7	19
GN.22141	GN 434-NI-26-M5-MT	26	M5	10	11	10	4.5	8	19
GN.22142	GN 434-NI-26-M6-MT	26	M6	10	11	10	4.5	8	20
GN.22143	GN 434-NI-34-M6-MT	34	M6	12	13	12	5	10	34
GN.22144	GN 434-NI-34-M8-MT	34	M8	12	13	12	5	9	32

GN 434-A4:



Code	Description	d1	d2	d3	b	h1	h2	tmin	⚖
GN.29201	GN 434-A4-20-M4-MT	20	M4	8	9	8	3.5	7	18
GN.29202	GN 434-A4-26-M4-MT	26	M4	10	11	10	4.5	7	19
GN.29204	GN 434-A4-26-M5-MT	26	M5	10	11	10	4.5	8	19
GN.29206	GN 434-A4-26-M6-MT	26	M6	10	11	10	4.5	8	20
GN.29208	GN 434-A4-34-M6-MT	34	M6	12	13	12	5	10	34
GN.29209	GN 434-A4-34-M8-MT	34	M8	12	13	12	5	9	32

Clamping elements